

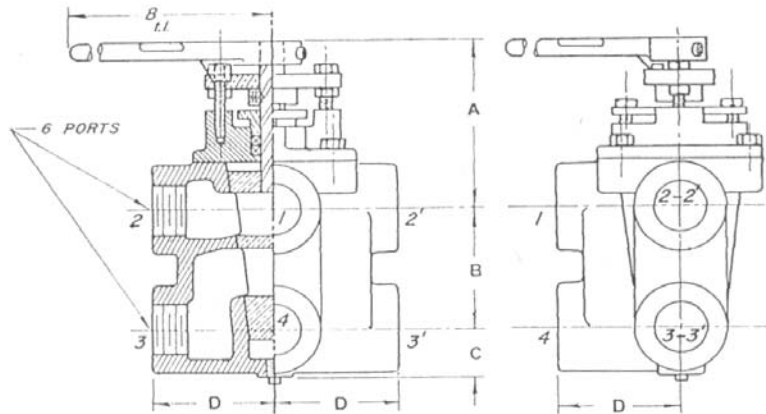
KRAISSL TRANSFER VALVES

MODEL 72AA(H)S(S) SERIES SIZES, RATINGS AND DIMENSIONS

STANDARD PRESSURE - MAX. W. P. 175 PSIG C.I. & 400 PSIG C.S.						
MODEL	SIZE	A	B	C	D	WGT.LB.
72-31AA(S)	3/4"	3 7/8	2 5/8	1 1/8	2 5/8	14
72-33AA(S)	1"	3 7/8	2 5/8	1 1/8	2 5/8	14
72-35AA(S)	1 1/4"	6 3/4	2 3/4	1 11/16	3 3/4	35
72-37AA(S)	1 1/2"	6 3/4	2 3/4	1 11/16	3 3/4	35
72-39AA(S)	2"	6 3/4	3 13/16	3	5 7/8	85
72-41AA(S)	2 1/2"	6 3/4	3 13/16	3	5 7/8	85
HIGH PRESSURE - MAX. W. P. 500 PSIG C.S.						
72-31AAHS	3/4"	3 7/8	2 5/8	1 1/8	2 5/8	14
72-33AAHS	1"	3 7/8	2 5/8	1 1/8	2 5/8	14
72-35AAHS	1 1/4"	6 3/4	2 3/4	1 11/16	3 3/4	35
72-37AAHS	1 1/2"	6 3/4	2 3/4	1 11/16	3 3/4	35
72-39AAHS	2"	6 3/4	3 13/16	3	5 7/8	85
72-41AAHS	2 1/2"	6 3/4	3 13/16	3	5 7/8	85

DESIGNED FOR CONTINUOUS FLOW.

PORT INTERCONNECTIONS:
IN POSITION SHOWN - 1 & 2, 3 & 4
IN OTHER POSITION - 1 & 2', 3' & 4



Dimensions in inches subject to casting & assembly variations.

THE KRAISSL COMPANY, INC.
299 WILLIAMS AVENUE
HACKENSACK, NJ 07601-5225
Phone:(201)342-0008, Fax:(201)342-0025
E-mail: Kraissl@aol.com

A2362 (9609)