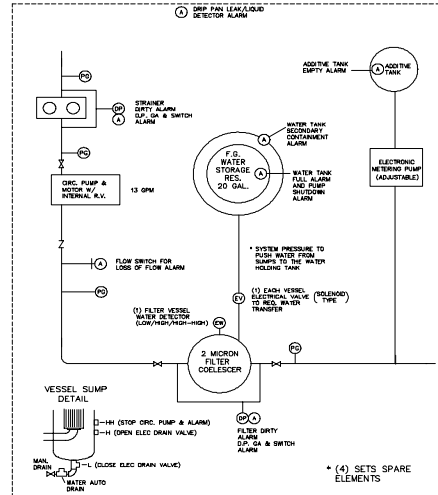




Automation, Inc

Fuel Filtration & Conditioning System



Model #RVFS-1-1FS – Single Filter vessel

Layout

Includes:

- Viking Positive Displacement Gear Pump up to 30 GPM with internal relief valve
- Duplex Basket Strainer with differential pressure switch for "strainer dirty" alarm indication
- Racor Filter elements for removal of water & particulates to 2 microns
- Catch Basin for Spilled Oil with leak switch and $\frac{3}{4}$ "NPT Drain
- Solenoid valve for automatic removal of excess water in fuel

Control Panel

Features:

- UL-508A Approved
- Operator Interface for (setup and alarm / status indications)
- NEMA 4 Weatherproof Enclosure
- Alarm Light, Horn, Reset Pushbutton
- Power On Light
- Power Disconnect

Alarms:

- Strainer Dirty
- Filter / Coalescer Dirty
- High System Pressure
- Water in Fuel
- High Water In Drum
- Filtration System Leak
- Chemical Additives Low